

SUNRIDGE HIGHLANDS NO. 1

LOTS 14 to 26

IN WEBER COUNTY

PREFIX: 23-067

C. A. "H"

SEE 23-064-0001

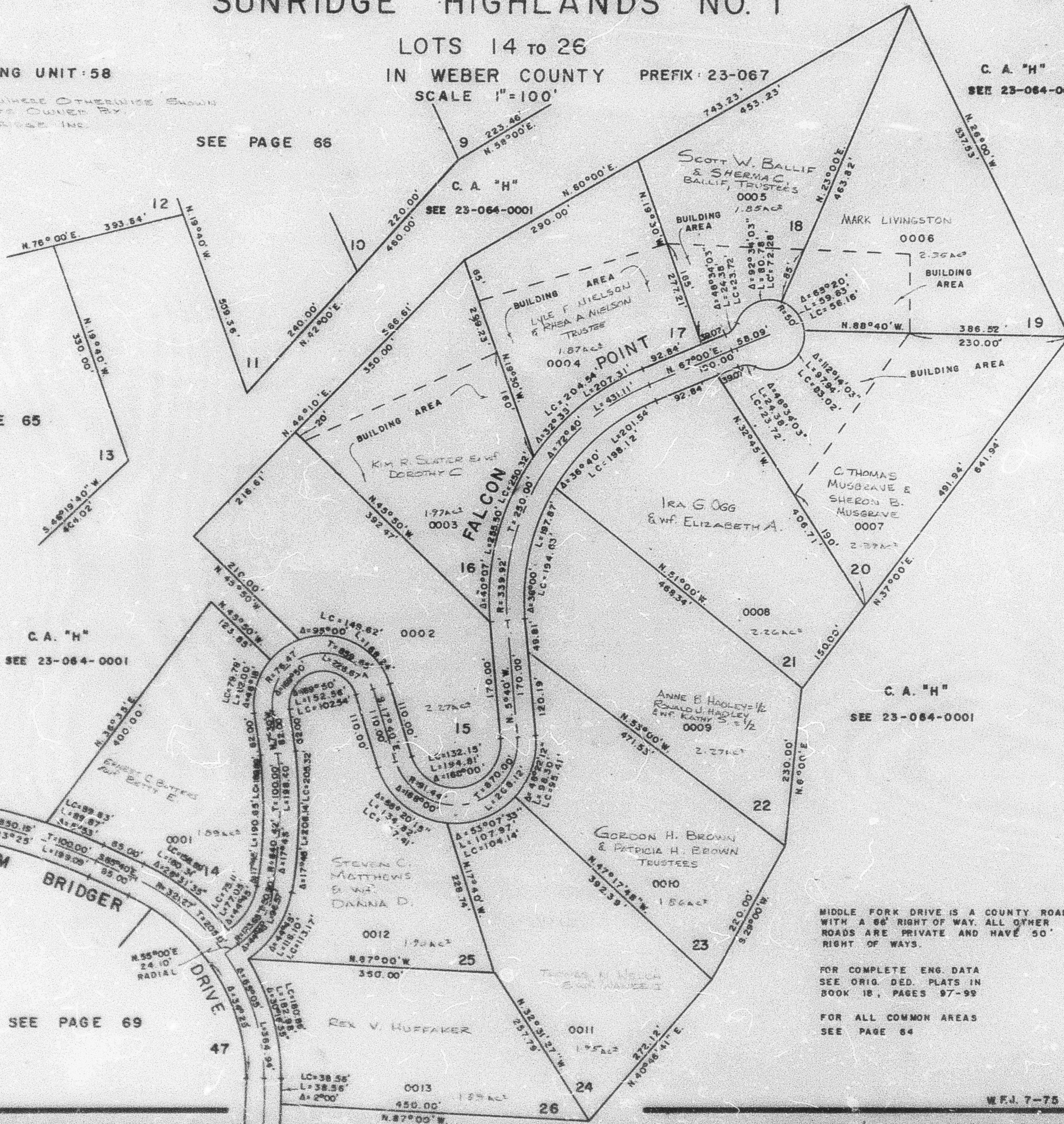
TAXING UNIT: 58

SCALE 1"=100'

EXCEPT WHERE OTHERWISE SHOWN
ALL LOTS OWNED BY
SUNRIDGE, INC.

SEE PAGE 66

SEE PAGE 65



MIDDLE FORK DRIVE IS A COUNTY ROAD WITH A 66' RIGHT OF WAY. ALL OTHER ROADS ARE PRIVATE AND HAVE 50' RIGHT OF WAYS.

FOR COMPLETE ENG. DATA SEE ORIG. DED. PLATS IN BOOK 18, PAGES 97-99

FOR ALL COMMON AREAS SEE PAGE 64